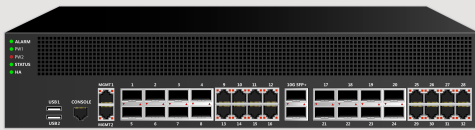




SANMINA

## PCBA & System Assembly

**Cost Effective  
High-mix,  
High-volume  
Manufacturing**



**Plovdiv, Bulgaria**



Providing a complete solution for your electronic manufacturing needs in eastern Europe, the Sanmina facility in Plovdiv, Bulgaria offers a wide range of manufacturing capabilities for high-mix and high-volume products. We provide a full range of New Product Introduction (NPI), manufacturing and test services to

companies in the communications, networking, automotive, industrial and clean technology sectors. For all of these industries we provide supply chain development and process development services. We manage all aspects of product engineering support during manufacturing, including cost-reduction, sustaining engineering and documentation management. Our Plovdiv facility is located within 1.5 hours of Sofia international airport and has convenient access to major seaports. It is also strategically located at the intersection of three pan-European road networks.

## MANUFACTURING CAPABILITIES

- Automotive High Volume
- LED lighting systems
- Advanced SMT Assembly
- Full process & part traceability
- New Product Introduction
- Potting
- Conformal coating
- Adhesive application
- Low & High Volume Production
- High Mix

## ENGINEERING CAPABILITIES

- Mfg. Process Design
- Lean Six Sigma, 5S, PPAP
- Tester development
- 2D / 3D CAD Design

## TEST CAPABILITY

- Functional Test
- ICT, in-line 3D AOI & 3D X-ray
- Environmental Testing
- In-House ICT & Functional test development

## TECHNOLOGIES

- SMT, PTH
- Wave soldering
- No-clean Processes
- RoHS compliant

## LOGISTICS SERVICES

- Repair/rework
- System configuration CTO, BTO

## CERTIFICATIONS

- ISO 9001
- ISO 14001
- IATF 16949 (LOC)

# Sanmina Worldwide



**IMS INTEGRATED MANUFACTURING SERVICES**

Carrollton, TX	Kenosha, WI	Plovdiv, BGR
Chennai, IND	Kunshan, CHN	Reynosa, MEX
Costa Mesa, CA	Ma'alot, ISR	Salt Lake City, UT
Fermoy, IRL	Manchester, NH	San Jose, CA
Guadalajara, MEX	Örnsköldsvik, SWE	Shenzhen, CHN
Gunzenhausen, DEU	Ottawa, CAN	Singapore, SGP
Haukipudas, FIN	Pathum Thani, THA	Tatabánya, HUN
Huntsville, AL	Penang, MYS	Yasu, JPN

**AMT OPTICAL/RF AMT**

Carrollton, TX  
Guadalajara, MEX  
Ottawa, CAN  
Shenzhen, CHN  
Pathum Thani, THA

**GS GLOBAL SERVICES**

Basingstoke, GBR	Juarez, MEX
Bogota, COL	Johannesburg, ZAF
Bothell, WA	Kunshan, CHN
Brno, CZE	Pathum Thani, THA
Chennai, IND	Penang, MYS
El Paso, TX	San Jose, CA
Fort Mill, SC	Tatabánya, HUN
Guadalajara, MEX	

**DC DESIGN CENTER**

Carrollton, TX  
Chennai, IND  
Colorado Springs, CO  
Guadalajara, MEX  
Huntsville, AL  
Kanata, CAN  
Singapore, SGP  
Yasu, JPN

**MS MECHANICAL SYSTEMS**

Austin, TX  
Fremont, CA  
Guadalajara, MEX  
Houston, TX  
Newark, CA  
Ma'alot, ISR

**CAB CABLES**

Monterrey, MEX  
Port Glasgow, SCT  
San Jose, CA

**BP BACKPLANE**

Guadalajara, MEX  
Kunshan, CHN  
San Jose, CA

**PCB PRINTED CIRCUIT BOARD**

Costa Mesa, CA  
San Jose, CA  
Singapore, SGP  
Wuxi, CHN

**PL PLASTICS**

Turtle Lake, WI

## ABOUT SANMINA CORPORATION

Sanmina Corporation is a Fortune 500 company and a leading global provider of integrated manufacturing solutions, components, products, repair, logistics and after-market services. Recognized as a technology leader, Sanmina provides end-to-end manufacturing solutions, delivering superior quality and support to Original Equipment Manufacturers (OEMs) primarily in the communications networks, cloud solutions, medical, defense and aerospace, industrial and automotive segments. Sanmina has facilities strategically located in key regions throughout the world.

For more information, visit [www.sanmina.com](http://www.sanmina.com)

Sanmina Corporation is an EEO/ AA employer

©2022 Sanmina Corporation. All rights reserved. Sanmina® is a registered trademark of Sanmina Corporation. All other trademarks and product names used in this publication are for identification purposes only and may be trademarks of their respective owners.