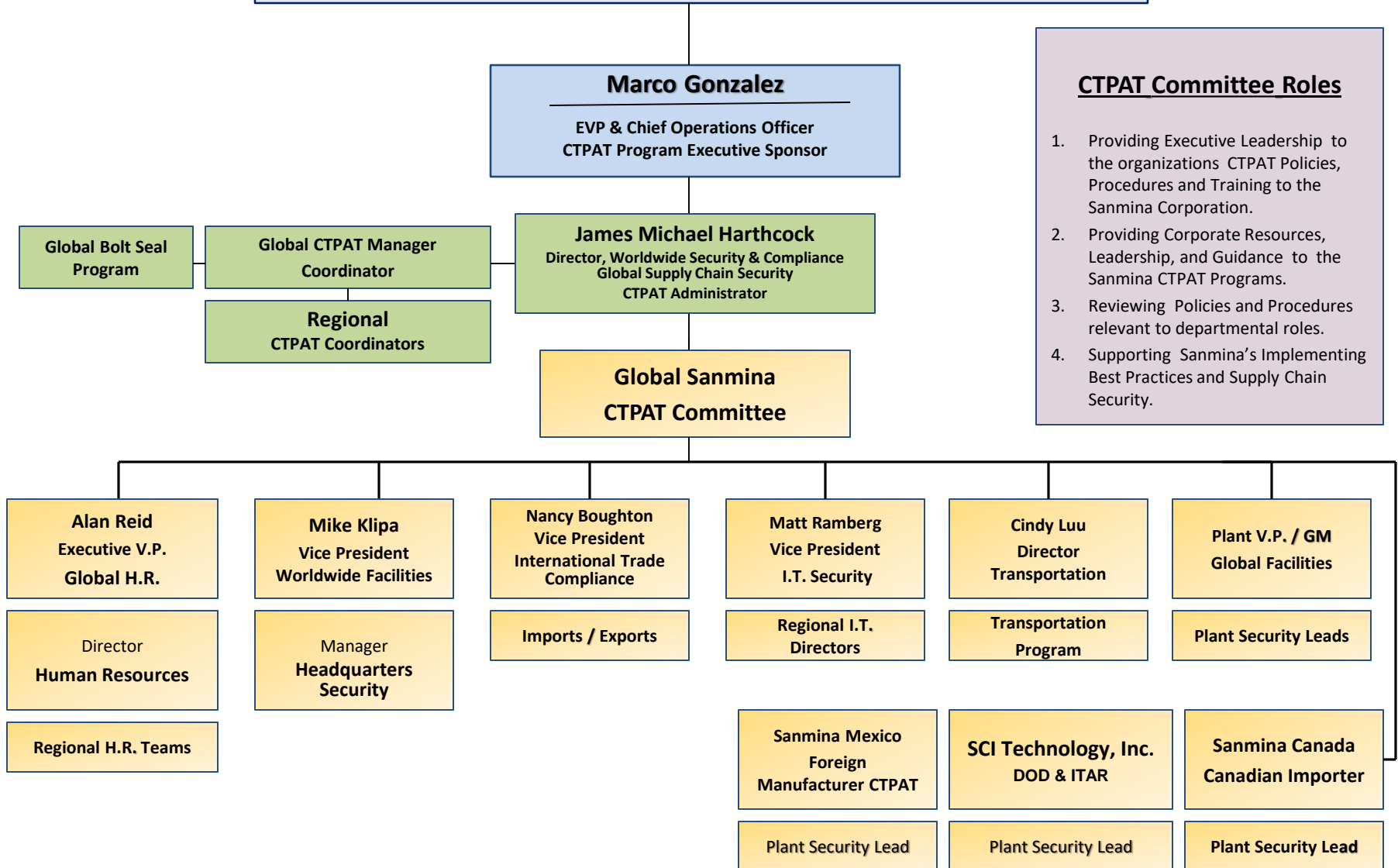


# Sanmina Corporations Global CTPAT Organization



- CTPAT Committee Roles**
1. Providing Executive Leadership to the organizations CTPAT Policies, Procedures and Training to the Sanmina Corporation.
  2. Providing Corporate Resources, Leadership, and Guidance to the Sanmina CTPAT Programs.
  3. Reviewing Policies and Procedures relevant to departmental roles.
  4. Supporting Sanmina's Implementing Best Practices and Supply Chain Security.