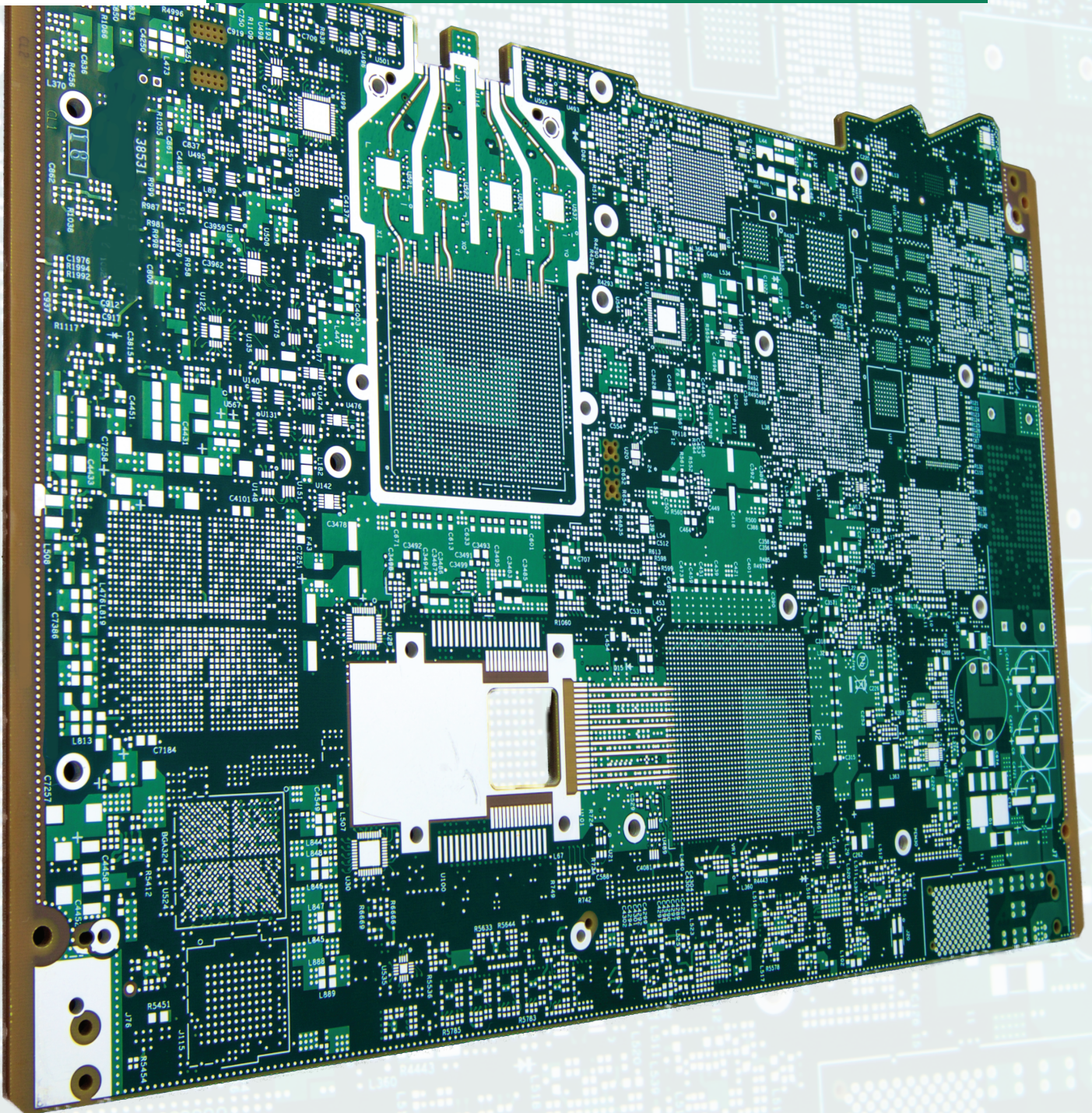




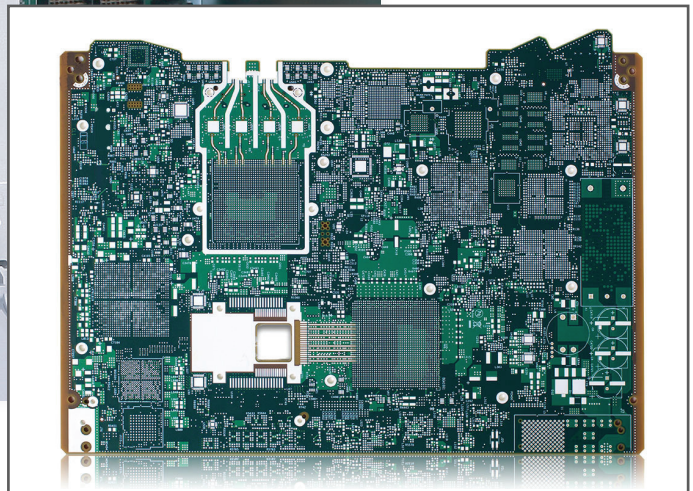
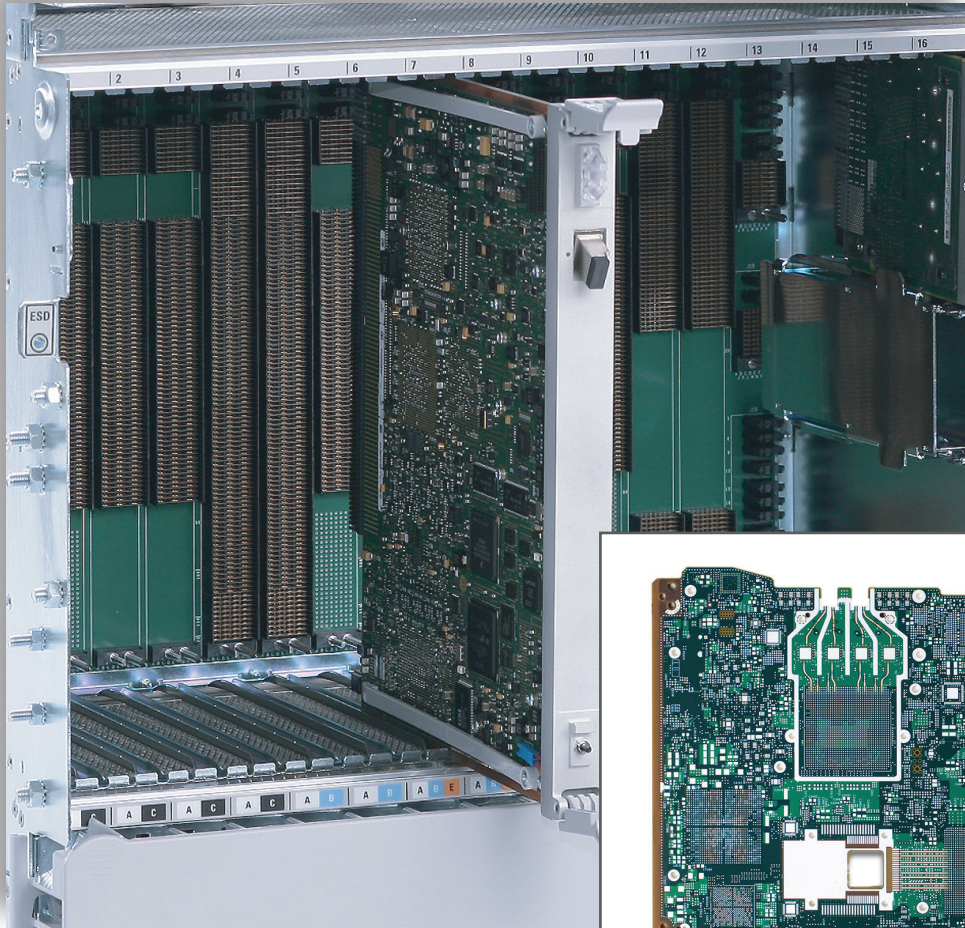
SANMINA®

Printed Circuit Boards

THE WORLD'S MOST ADVANCED INTERCONNECT SOLUTIONS

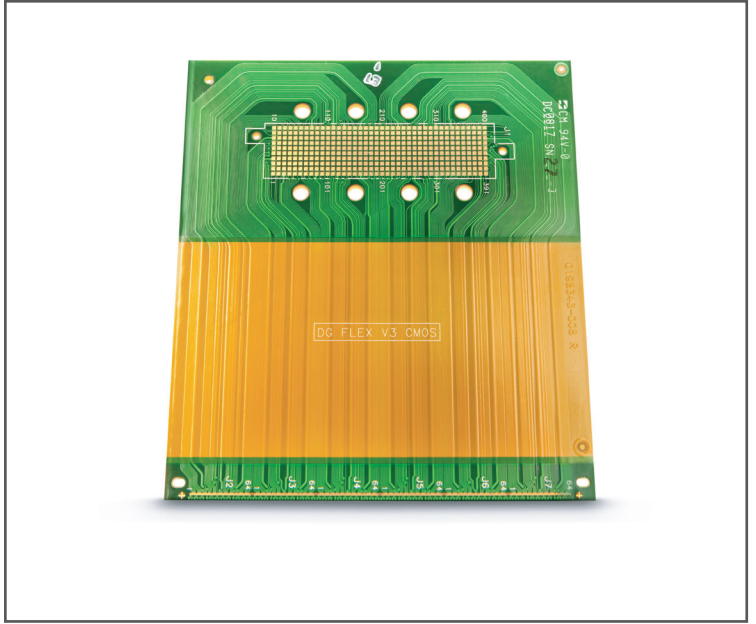
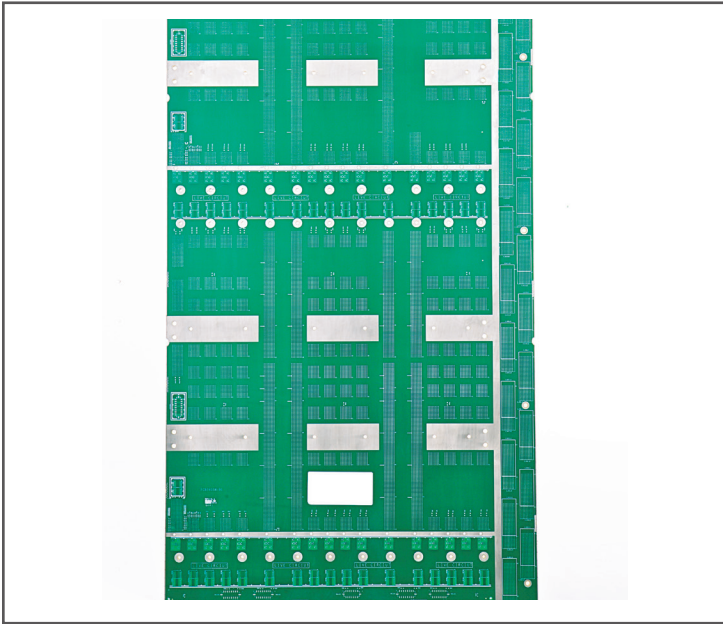


Building on 30 years of innovation, Sanmina continues to drive PCB technology beyond 25GHz for high performance networking, computing and communications applications, along with mission critical PCBs for industrial, medical and aerospace products. Sanmina provides end-to-end services from, design, layout and signal integrity analysis to in-house qualification of the latest laminate materials.



COMPLETE INTERCONNECT & SYSTEM SOLUTIONS: PCB'S, BACKPLANES, ENCLOSURES

- Ultra High Aspect Ratio (> 34:1) Through Holes, 70+ Layer PCBs
- Large Format PCBs, Panel Sizes up to 54 Inches
- HDI, Any-Layer-Via structures, Backdrilling, Blind Via Formation
- IP and Technology: ZBC™, SVP™, ZSL™, Buried Capacitor®, SiMOV™ Buried Resistors
- Advanced Thermal Solutions: Coin in Cavity and Copper Weights up to 10 Ounces

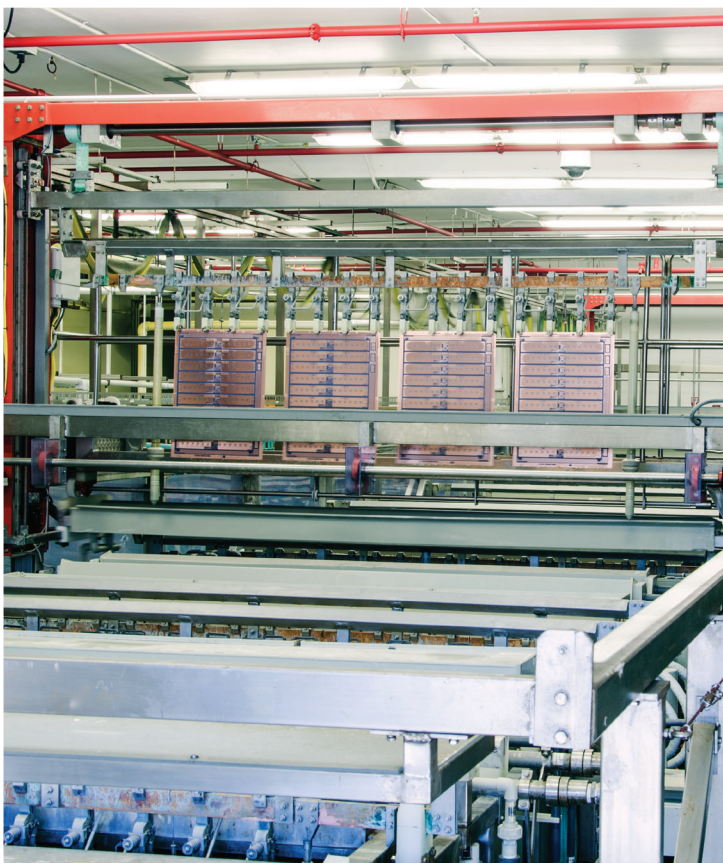


BACKPLANES EXPERTISE

As the world's leading backplane manufacturer, Sanmina provides the most complete backplane solutions, including design, signal integrity analysis, fabrication, assembly, system integration, and 100% electrical testing including available VNA testing, and semi-automated TDR.

FLEX, RIGID-FLEX EXPERTISE

Sanmina provides Flex and Rigid-Flex PCBs for the Medical, Industrial, Military, and Aerospace industries. Our ISO certified and Mil-PRF qualified facilities specialize in fine line, mixed process designs, wire bondable gold and other advanced technologies.



END TO END SERVICES:

- PCB Design, Layout, Rules Checking, Design for Cost and Manufacturability
- Quick-Turn Prototyping
- New Product Introduction and Global Manufacturing
- Materials Analysis, Laminate Qualification, Signal Integrity & Reliability Labs



San Jose, CA
Costa Mesa, CA

Wuxi, China

Singapore

ABOUT SANMINA CORPORATION

Sanmina Corporation is a leading integrated manufacturing solutions provider serving the fastest-growing segments of the global Electronics Manufacturing Services (EMS) market. Recognized as a technology leader, Sanmina provides end-to-end manufacturing solutions, delivering superior quality and support to Original Equipment Manufacturers (OEMs) primarily in the medical, communications networks, defense and aerospace, industrial and semiconductor systems, multimedia, computing and storage, automotive and clean technology sectors. Sanmina has facilities strategically located in key regions throughout the world.

For more information, visit www.sanmina.com.

NORTH AMERICA

2700 North First Street
San Jose, CA 95134
Tele: +408.964.3500
Fax: +408.964.3440

EUROPE & MIDDLE EAST

Lerchenstrasse 1
91710 Gunzenhausen
Germany
Tele: +49.(0)9831.51.0

GREATER CHINA

Kader Industrial Building, 5th Floor
22 Kai Cheung Road
Kowloon Bay, Hong Kong
Tele: +852.2305.1800
Fax: +852.2799.2398

SOUTHEAST ASIA

No 2, Chai Chee Drive
Singapore 469044
Republic of Singapore
Tele: +65-6245-7300
Fax: 65-6274-5385

www.sanmina.com

Sanmina Corporation is an EEO/AA employer

©2017 Sanmina Corporation. All rights reserved. Sanmina® is a registered trademark of Sanmina Corporation. All other trademarks and product names used in this publication are for identification purposes only and may be trademarks of their respective owners.

PCB_BR_022719