



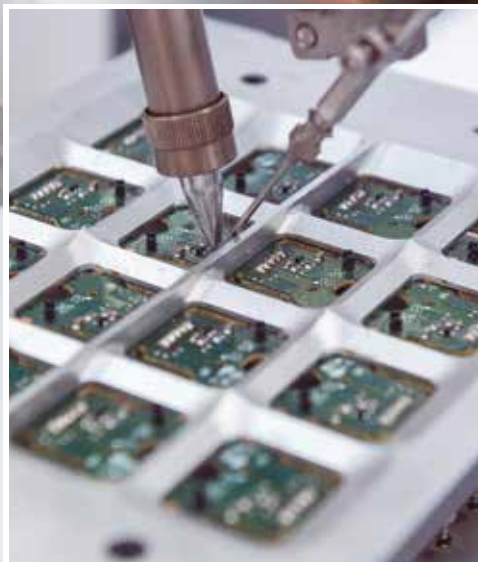
SANMINA®

# GLOBAL SERVICES

A ONE PROVIDER SOLUTION



FULFILLMENT & INTEGRATION



AFTERMARKET SERVICES



LIFE CYCLE MANAGEMENT

**WITH OVER 60 SERVICE CENTERS WORLDWIDE, SANMINA GLOBAL SERVICES (SGS) PROVIDES FULLFILMENT AND REPAIR SERVICES TO MANY OF THE FORTUNE 100'S MOST RESPECTED COMPANIES.** We provide assembly, configuration, distribution, installation, on-site services, returns management, repair and refurbishment services and product life cycle management, at a lower cost and with fully integrated data management.



### **ORDER FULFILLMENT & INTEGRATION**

- Complex Kitting (BTO)
- Final Configuration (CTO)
- Full Integration
- Direct Order Fulfillment (DOF)
- Trade Compliance

*"Seamlessly Integrating Manufacturing, Customer Configuration and Logistics"*



### **AFTERMARKET SERVICES**

- Repair - Board & System
- Refurbishment
- Triage & Screening
- Advanced Exchange
- Failure Analysis

*"Minimizing Down-Time & Inventory while Funneling Failure Analysis Data Back to the Supply Chain"*



### **PRODUCT LIFE CYCLE MANAGEMENT**

- Inventory/Spares Management
- Parts Harvesting & Defective Storage
- Reverse & Re-Engineering
- Sustaining Engineering
- Lifetime Parts Planning

*"Extending Product Life & Support"*

**SANMINA GLOBAL SERVICES (SGS) - Leadership with Engineering, Supply Chain and Information Technology**





*BTO/CTO for complex telecom and cloud storage equipment with thousands of options*



*Direct Order Fulfillment and Repair for tens of thousands of scanners*



*Repair of a broad range of complex medical products at several Sanmina locations*

**EXPERTISE AND EXPERIENCE WITH COMPLETE PRODUCTS & TECHNOLOGY ACROSS A WIDE RANGE OF INDUSTRIES.** Sanmina has developed a post manufacturing & aftermarket service strategy based on a robust IT technology, supply chain optimization, lean practices, strong materials management practices, established quality systems, advanced engineering services that deliver value and an integrated global service solution.

ORDER FULFILLMENT  
INTEGRATION

ENGINEERING

INFORMATION TECHNOLOGY


AFTERMARKET  
SERVICES

## COMPLETE CAPABILITY & GLOBAL FOOTPRINT

- 62 DEDICATED SERVICE SITES
- 25,000+ UNITS SHIPPED DAILY: UNITS OF 1, BULK SHIPMENTS
- HIGH AND LOW VOLUME ENVIRONMENTS
- ONE GLOBAL IT SYSTEM

SUPPLY CHAIN

PRODUCT LIFE  
CYCLE MANAGEMENT



**North America  
(Sanmina Operations)**

- El Paso, TX
- Carrollton, TX
- Fort Mill, SC
- Huntsville, AL
- Markham, Ont, CAN
- San Jose, CA
- Manchester, NH
- Salt Lake City, Utah

**Europe  
(Sanmina Operations)**

- Brno, CZH
- Fermoy, IRE
- Gunzenhausen, GER
- Johannesburg, RSA
- Basingstoke, UK
- Ma'alot, ISR
- Haukipudas, FIN
- Tatabánya, HUN

**Europe  
(Partner Sites)**

- Dubai, UAE
- Istanbul, TKY
- Moscow
- Saudi Arabia
- Tel Aviv, ISR
- Ukraine
- Ghana
- Kenya

**Latin America  
(Sanmina Operations)**

- Bogota, COL
- Buenos Aires, ARG
- Sao Paulo, BRZ
- Guadalajara, MEX
- Juarez, MEX
- Mexico City, MEX
- Monterrey, MEX
- Reynosa, MEX

**Latin America  
(Partner Sites)**

- Chile
- Costa Rica
- Dominican Rep
- Ecuador
- El Salvador
- Guatemala
- Honduras
- Panama
- Peru
- Puerto Rico
- Venezuela
- Uruguay
- Nicaragua

**Asia  
(Sanmina Operations)**

- Chennai, IND
- Kunshan, PRC
- Zhangpu, PRC
- Shenzhen, PRC
- Melbourne, AUS
- Pathum Thani, TLD
- Penang, MYS
- Singapore
- Narita, JPN
- Hong Kong

**Asia  
(Partner Sites)**

- Indonesia
- New Zealand
- Philippines
- South Korea
- Taiwan
- Tokyo, JPN
- Vietnam

## ABOUT SANMINA CORPORATION

Sanmina Corporation is a leading integrated manufacturing solutions provider serving the fastest-growing segments of the global Electronics Manufacturing Services (EMS) market. Recognized as a technology leader, Sanmina provides end-to-end manufacturing solutions, delivering superior quality and support to Original Equipment Manufacturers (OEMs) primarily in the medical, communications networks, defense and aerospace, industrial and semiconductor systems, multimedia, computing and storage, automotive and clean technology sectors. Sanmina has facilities strategically located in key regions throughout the world.

For more information, visit [www.sanmina.com](http://www.sanmina.com).

### NORTH AMERICA

2700 North First Street  
San Jose, CA 95134  
Tele: +408.964.3500  
Fax: +408.964.3440

### EUROPE & MIDDLE EAST

Lerchenstrasse 1  
91710 Gunzenhausen  
Germany  
Phone: +49.(0)9831.51.0

### GREATER CHINA

Kader Industrial Building, 5th Floor  
22 Kai Cheung Road  
Kowloon Bay, Hong Kong  
Tele: +852.2305.1800

### SOUTHEAST ASIA

No 2, Chai Chee Drive  
Singapore 469044  
Singapore  
Tele: +65.6245.7300

[www.sanmina.com](http://www.sanmina.com)

Sanmina Corporation is an EEO/AA employer

©2017 Sanmina Corporation. All rights reserved. Sanmina® is a registered trademark of Sanmina Corporation. All other trademarks and product names used in this publication are for identification purposes only and may be trademarks of their respective owners.