



SANMINA

## COMPANY OVERVIEW

# WHAT WE MAKE, MAKES A DIFFERENCE.™

### ABOUT SANMINA

Sanmina Corporation makes some of the most complex and innovative optical, electronic and mechanical products in the world. As a leading integrated manufacturing services company, with revenue totaling USD \$7.11 billion for fiscal year 2018, Sanmina provides custom design, manufacturing and global supply chain solutions to high technology Original Equipment Manufacturers (OEMs).

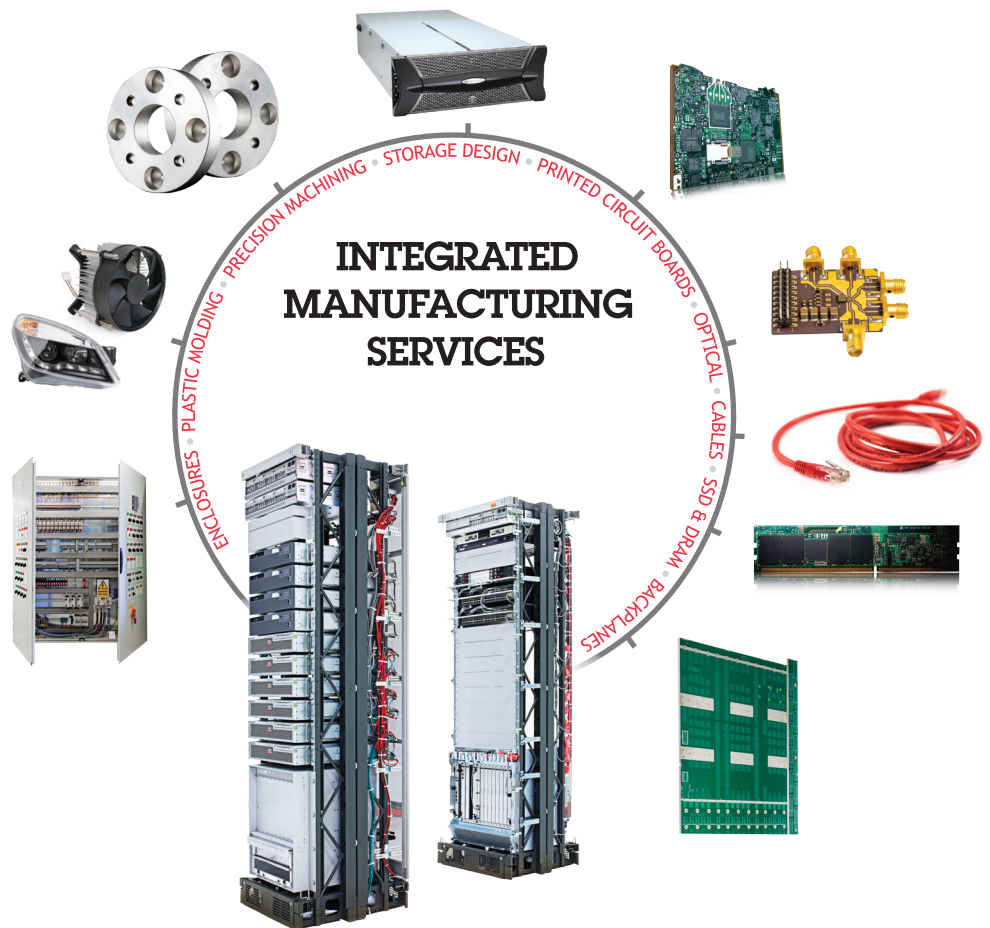
Sanmina maintains a network of regional design, quick turn, New Product Introduction (NPI) facilities and repair centers, in addition to a complete global footprint of manufacturing operations in 23 countries on six continents. Each day, in every region of the world, Sanmina designs, manufactures, ships and repairs complex, mission-critical products. For over 35 years, customers have come to expect quality, delivery, reliability and service from Sanmina. Together we build productive relationships based on exceptional customer satisfaction.

### Long Term Focus-Key Industries:

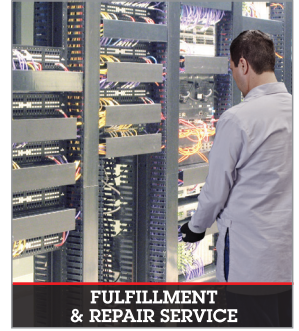
- Communications Networks
- Medical Systems
- Defense & Aerospace
- Industrial
- Enterprise Computing & Storage
- Energy & Clean Technology
- Multimedia
- Automotive

### Sanmina Technology and Components:

- Advanced Printed Circuit Boards
- Backplanes
- Cables
- Enclosures, Machining, Casting & Plastics
- Storage & Memory Solutions
- Optical, RF & Microwave Solutions



# TECHNOLOGY AND SERVICES MAKE A DIFFERENCE FOR OUR CUSTOMERS



## END-TO-END SOLUTIONS

Sanmina's emphasis on innovative technology, quality and end-to-end supply chain services provides a complete solution for our customers that reduces costs and simplifies supply chains.

We provide customers with design and technology expertise in many industries, including telecommunications, medical, computing, storage, industrial, defense and aerospace, energy and multimedia. This expertise improves product performance, time to market and costs.

## OPERATIONS EXCELLENCE AND INFORMATION TECHNOLOGY

Sanmina continues to invest in its information technology (IT) system, operations infrastructure and quality systems. Best-in-class software tools and technology include applications in product design and engineering, order and production administration, materials planning, logistics and supply chain management. These tools are consistently deployed in all of Sanmina's operations, providing customers with a consistent experience in all Sanmina facilities. In addition, Sanmina has proprietary process data collection and quality management tools. These tools provide real-time visibility of critical quality data to customers, helping ensure that products we design and produce have the highest quality possible.

## INNOVATION AND PARTNERSHIP

Service means the ability to understand and deliver on customer needs. Our experienced design, engineering and supply chain personnel help our customers innovate. Our technology provides you with a competitive edge. Our end-to-end services simplify your supply chains. Sanmina's footprint extends your global reach. These advantages, along with our industry expertise improve your time to market, total landed costs and asset structure – clear reasons why some of the world's most innovative companies partner with Sanmina.

## ABOUT SANMINA CORPORATION

Sanmina Corporation is a leading integrated manufacturing solutions provider serving the fastest-growing segments of the global Electronics Manufacturing Services (EMS) market. Recognized as a technology leader, Sanmina provides end-to-end manufacturing solutions, delivering superior quality and support to Original Equipment Manufacturers (OEMs) primarily in the medical, communications networks, defense and aerospace, industrial and semiconductor systems, multimedia, computing and storage, automotive and clean technology sectors. Sanmina has facilities strategically located in key regions throughout the world.

For more information, visit [www.sanmina.com](http://www.sanmina.com).

Sanmina Corporation is an EEO/AA employer

©2018 Sanmina Corporation. All rights reserved. Sanmina® is a registered trademark of Sanmina Corporation. All other trademarks and product names used in this publication are for identification purposes only and may be trademarks of their respective owners.