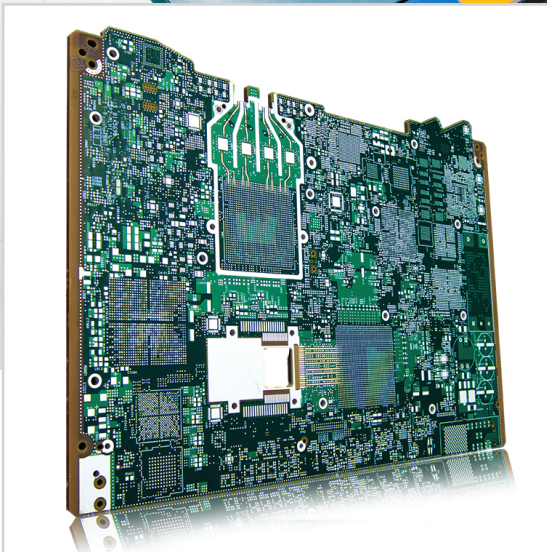




SANMINA

PCB Fabrication

**High Density
Printed Circuit
Boards in a
Best-cost Region**



Wuxi, China



Strategically located in the Singapore-Wuxi Industrial Park, our Sanmina Wuxi facility offers cost-effective high density microelectronic printed circuit boards with mid-to-high layer counts. Our 60,000 square meters facility offers quick turnaround, New Product Introduction (NPI) and prototype services for leading companies in the networking, medical, aerospace, industrial and automotive industries. We also deliver extensive technical capabilities including HDI, control depth drill/rout, hybrid materials, sequential lamination/sub assemblies, large format backplanes and high density interconnects.

Sanmina Worldwide

Manufacturing Capabilities

- Up to 36 Layers
- 20:1 Aspect Ratios
- Controlled & Differential Impedance
- POFV / VIPPO

Engineering Capabilities

- Design for Manufacturability (DFx)
- Front-End Tooling
- Value Engineering
- Laser Formed Microvias

Testing Capabilities

- Electrical Test by Flying Probe, Universal or Dedicated Fixture
- Surface Insulation Resistance (SIR)
- Liquid-to-Liquid Temperature Cycling
- Solvent Extract Conductivity
- AOI / AVI

Technologies

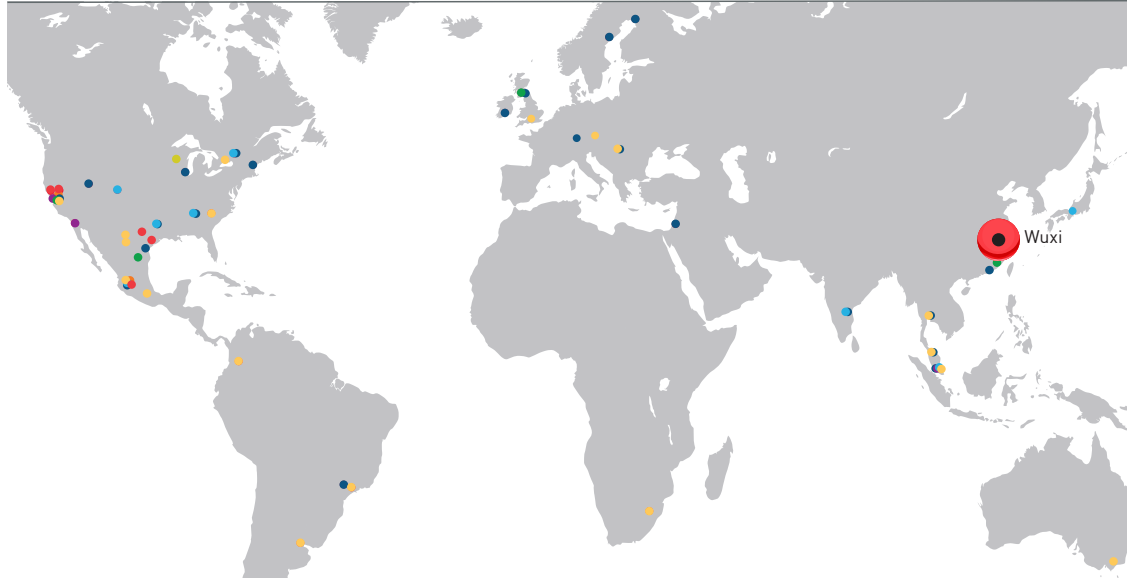
- ENIG
- Electrolytic Nickel/Gold
- OSP (Entek plus HT)
- Immersion Tin
- Immersion Silver
- Lead Free HASL & Leaded HASL

Logistic Services

- Consignment
- Warehousing
- Customer Service Support

Certifications

- ISO 9001 and ISO 14001
- TL 9000
- IATF 16949
- AS 9100
- NADCAP
- UL Approved
- ESD S20.20
- Telcordia GR-78-CORE
- Telcordia Compliance



CABLES

- Zhangpu, CN
- Monterrey, MX
- Port Glasgow, UK
- San Jose, CA



GLOBAL SERVICES

- Bogota, CO
- Brno, CZ
- Buenos Aires, AR
- El Paso, TX
- Guadalajara, MX
- Johannesburg, ZA
- Penang, MY
- Tatabánya, HU
- Thailand, TH
- Juarez, MX
- Markham, ON
- Melbourne, AU
- Mexico City, MX
- Sao Paulo, BR
- Basingstoke, UK
- Kunshan, CN
- Singapore, SG
- San Jose, CA
- Fort Mill, SC



DESIGN CENTERS

- Carrollton, TX
- Chennai, IN
- Colorado Springs, CO
- Guadalajara, MX
- Kanata, ON
- Singapore, SG
- Yasu, JP
- Huntsville, AL



INTEGRATED MANUFACTURING SERVICES

- Carrollton, TX
- Campinas, BR
- Chennai, IN
- Fermoy, IR
- Guadalajara, MX
- Gunzenhausen, GR
- Haukipudas, FI
- Huntsville, AL
- Kanata, ON
- Kenosha, WI
- Kunshan, CN
- Ma'alot, IL
- Manchester, NH
- Örnköldsvik, SW
- Pathum Thani, TH
- Penang, MY
- Port Glasgow, UK
- San Jose, CA
- Shenzhen, CN
- Singapore, SG
- Tatabánya, HU
- Salt Lake City, UT
- Reynosa, MX



PLASTICS

- Turtle Lake, WI



PCB

- San Jose, CA
- Costa Mesa, CA
- Singapore, SG
- Wuxi, CN



BACKPLANES

- San Jose, CA
- Guadalajara, MX



MECHANICAL SYSTEMS

- Austin, TX
- Fremont, CA
- Guadalajara, MX
- Newark, CA
- Houston, TX
- Suzhou, CN

ABOUT SANMINA CORPORATION

Sanmina Corporation is a leading integrated manufacturing solutions provider serving the fastest-growing segments of the global Electronics Manufacturing Services (EMS) market. Recognized as a technology leader, Sanmina provides end-to-end manufacturing solutions, delivering superior quality and support to Original Equipment Manufacturers (OEMs) primarily in the medical, communications networks, defense and aerospace, industrial and semiconductor systems, multimedia, computing and storage, automotive and clean technology sectors. Sanmina has facilities strategically located in key regions throughout the world.

©2019 Sanmina Corporation. Sanmina is a trademark or registered trademark in the U.S. and/or other jurisdictions of Sanmina Corporation. All trademarks and registered trademarks are the property of their respective owners. For more information, visit www.sanmina.com.