

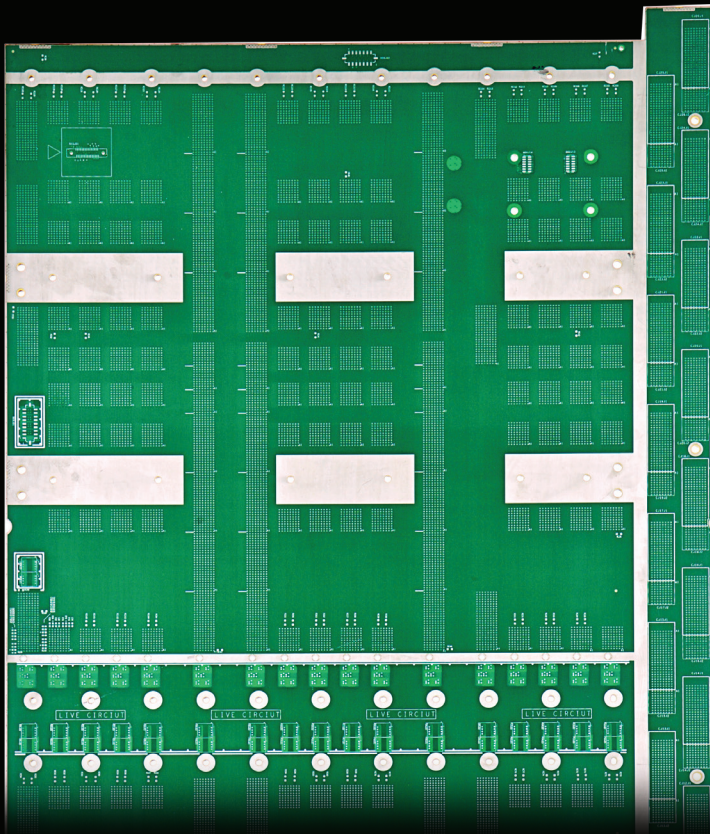
KUNSHAN, CHINA  
Backplanes



# ONE OF MOST EXPERIENCED BACKPLANE MANUFACTURERS IN THE WORLD.

The Sanmina, Kunshan backplane facility specializes in backplane assembly and systems integration, providing customers with a best-cost manufacturing solution for high-technology telecommunications and data-networking backplanes. With on-site engineering support, this facility helps customers with tooling, signal integrity and product verification for efficient manufacturing and new product introduction. Our Kunshan facility is strategically located to provide warehousing and manage imports/exports, offering a competitive advantage for our customers.

To learn more, visit [www.sanmina.com](http://www.sanmina.com).



## MANUFACTURING CAPABILITIES

- Backplane Assembly
- Large Backplane Panel Capability
- Chassis-Level System Integration and Test
- Automated Electric Connector Insertion
- Quickturn

## ENGINEERING CAPABILITIES

- New Product Introduction (NPI)
- Design Analysis and Evaluations
- Tooling Design
- ECO Management
- PFMEA/PPAP
- Lean Six Sigma Deployment

## TESTING CAPABILITIES

- ICT, Functional Test and Clamshell Test
- Hi-Pot
- EEPROM Programming/Testing
- RoBAT S1 Tester (AOI and Electrical, Dual-Sided)
- Power-Up Testing
- Chassis Level Test and Burn-In

## TECHNOLOGIES

- Lead-Free
- No-Clean and Aqueous Processing
- Eutectic and High Temperature Solder
- Double-Sided Boards
- Auto-Splice Pin Insertion
- Prototyping
- AOI and X-ray Testing

## LOGISTICS SERVICES

- Material Management
- Warehousing and EDI
- Import/Export Management
- Direct Drop Shipment
- After-Sale Engineering, Quality and RMA/SC Support

## CERTIFICATIONS

- ISO 9001 and 14001
- TS16949

© 2013 Sanmina Corporation. Sanmina is a trademark or registered trademark in the U.S. and/or other jurisdictions of Sanmina Corporation. All trademarks and registered trademarks are the property of their respective owners.

FFBP\_5502\_080513