

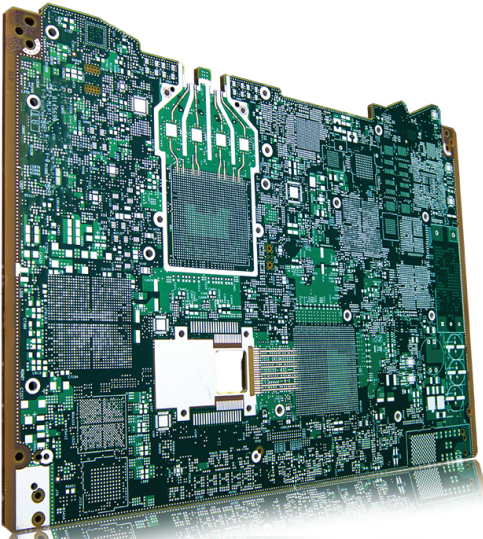


SANMINA

PCB Fabrication

Advanced Printed Circuit Boards Expertise

R15



Penjuru, Singapore



The Sanmina Penjuru, Singapore facility develops and produces advanced printed circuit boards (PCBs) for leading high technology companies in the optical, networking, medical, defense & aerospace and automotive industries. We specialize in high-density, micro-electronic PCBs with mid-to-high layer counts. With 240,000 square feet of manufacturing capacity, our facility offers the flexibility to support quick turnarounds and New Product Introduction (NPI). Our Penjuru facility offers a number of PCB technologies including rigid-flex, fiber optic, sequential lamination/ sub-assemblies, heavy copper, via-in-pad-plated-over (VIPPO), and high density interconnect (HDI) technology.

Sanmina Worldwide



Manufacturing Capabilities

- Mid- to High-Layer Count (2 - 28 Layers)
- Aspect Ratio 12:1
- Controlled Impedance
- Laser Drill HDI
- Sequential Interconnect
- Sub 3 Mils Lines/Space
- Via-in-pad Interconnect
- Wide Range of Surface Finishes, Including Wire Bondable Gold
- Lead-free, Halogen-free, Low Loss, Ultra Low Loss, PTFE Materials

Engineering Capabilities

- New Product Introduction (NPI)
- Design for Manufacturability (DFxM)
- Product, Process and Quality Engineering

Testing Capabilities

- Flying Probe
- Surface Insulation Resistance
- AOI and IST
- Universal and Dedicated Testing

Technologies

- Rigid Flex/HVRFlex™
- Heavy Copper
- Advanced Materials, Hybrid Construction
- Embedded Passives, Embedded Coins
- HDI, Multiple Level Interconnects, Microvias
- Mixed Surface Finishes
- Via-in-pad-plated-over (VIPPO)

Logistic Services

- Direct Order Fulfillment
- Consignment and Warehousing
- Global Technical and Customer Service

Certifications

- ISO 9001 and ISO 14001
- AS 9100
- IATF 16949
- TL 9000
- NADCAP

- **CABLES**
 - Zhangpu, CN
 - Monterrey, MX
 - Port Glasgow, UK
 - San Jose, CA

- **GLOBAL SERVICES**
 - Bogota, CO
 - Brno, CZ
 - Buenos Aires, AR
 - El Paso, TX
 - Guadalajara, MX
 - Johannesburg, ZA
 - Penang, MY
 - Tatabánya, HU
 - Thailand, TH
 - Juarez, MX
 - Markham, ON
 - Melbourne, AU
 - Mexico City, MX
 - Sao Paulo, BR
 - Basingstoke, UK
 - Kunshan, CN
 - Singapore, SG
 - San Jose, CA
 - Fort Mill, SC

- **DESIGN CENTERS**
 - Carrollton, TX
 - Chennai, IN
 - Colorado Springs, CO
 - Guadalajara, MX
 - Kanata, ON
 - Singapore, SG
 - Yasu, JP
 - Huntsville, AL

- **INTEGRATED MANUFACTURING SERVICES**
 - Carrollton, TX
 - Campinas, BR
 - Chennai, IN
 - Fermoy, IR
 - Guadalajara, MX
 - Gunzenhausen, GR
 - Haukipudas, FI
 - Huntsville, AL
 - Kanata, ON
 - Kenosha, WI
 - Kunshan, CN
 - Ma'alot, IL
 - Manchester, NH
 - Örnköldsvik, SW
 - Pathum Thani, TH
 - Penang, MY
 - Port Glasgow, UK
 - San Jose, CA
 - Shenzhen, CN
 - Singapore, SG
 - Tatabánya, HU
 - Salt Lake City, UT
 - Reynosa, MX

- **PLASTICS**
 - Turtle Lake, WI

- **PCB**
 - San Jose, CA
 - Costa Mesa, CA
 - Singapore, SG
 - Wuxi, CN

- **BACKPLANES**
 - San Jose, CA
 - Guadalajara, MX

- **MECHANICAL SYSTEMS**
 - Austin, TX
 - Fremont, CA
 - Guadalajara, MX
 - Newark, CA
 - Houston, TX
 - Suzhou, CN

ABOUT SANMINA CORPORATION

Sanmina Corporation is a leading integrated manufacturing solutions provider serving the fastest-growing segments of the global Electronics Manufacturing Services (EMS) market. Recognized as a technology leader, Sanmina provides end-to-end manufacturing solutions, delivering superior quality and support to Original Equipment Manufacturers (OEMs) primarily in the medical, communications networks, defense and aerospace, industrial and semiconductor systems, multimedia, computing and storage, automotive and clean technology sectors. Sanmina has facilities strategically located in key regions throughout the world.

©2019 Sanmina Corporation. Sanmina is a trademark or registered trademark in the U.S. and/or other jurisdictions of Sanmina Corporation. All trademarks and registered trademarks are the property of their respective owners. For more information, visit www.sanmina.com.