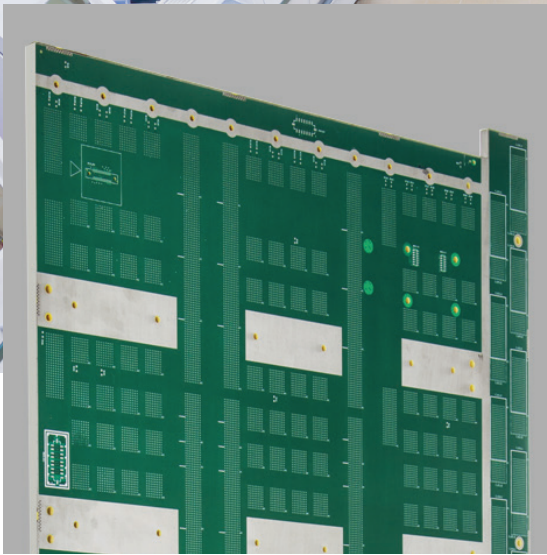




SANMINA

Backplane

One of the First and
Most Experienced
Backplane
Manufacturers
in the World



Guadalajara, Mexico



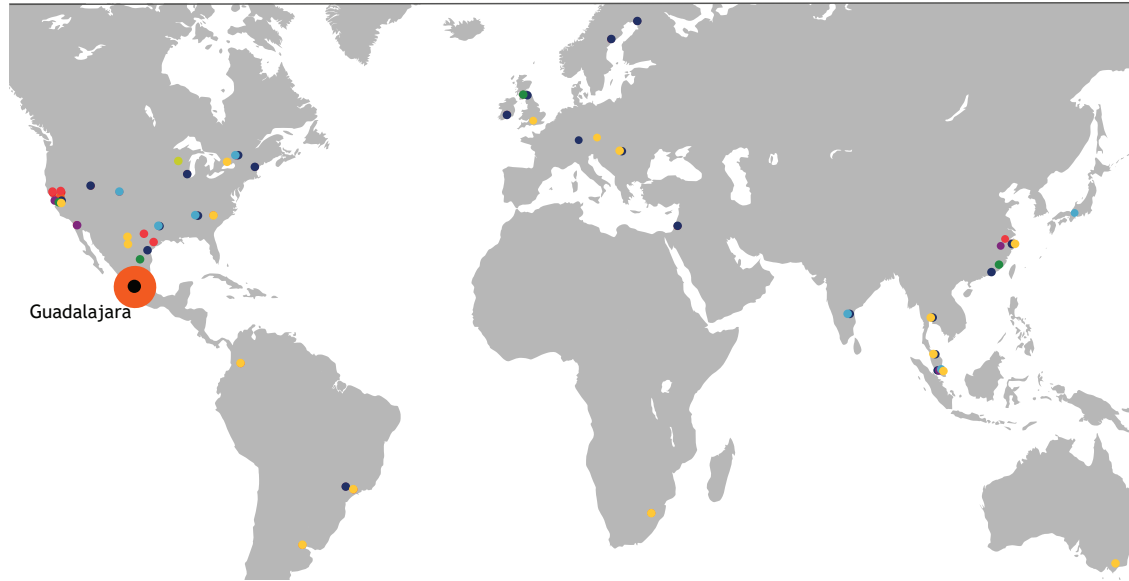
Sanmina Guadalajara offers its customers more than 20 years of manufacturing experience and over two million square feet of manufacturing capacity. As part of our comprehensive capabilities in Guadalajara, we provide customers with

complete backplane manufacturing and automated test capability along with full systems integration for high-complexity products, such as telecommunications systems, network switches and routers. Our backplane and system integration capability in Guadalajara is part of Sanmina's fully-integrated backplane capability, which includes:

- Backplane design
- Technology development
- High complexity and high layer count backplane/PCB fabrication
- Signal integrity analysis

We are ready to work with you now to develop and produce your most advanced backplanes.

Sanmina Worldwide



Manufacturing Capabilities

- Backplane Assembly
- Large Backplane Panel Capability
- Chassis-Level System Integration and Test
- Automated Electric Connector Pressing
- Quickturn

Engineering Capabilities

- NPI, DFM and DFT
- Test Engineering and Development
- ECO Management
- Quality Engineering
- Failure Analysis

Testing Capabilities

- ICT, Functional Test and Clamshell Hi-Pot
- EEPROM Programming/Testing
- RoBAT S1 Tester (AOI and Electrical, Dual-Sided)
- Power Up Testing
- Chassis-Level Test and Burn-In
- RoBat RXI
- RoBat RCI

Technologies

- Lead-Free Processes
- Multiple Finished and High-Speed Connector Systems
- Wave and Selective-Wave Soldering
- Dual-Sided Surface Mount
- AOI

Logistics Services

- Direct Fulfillment
- Demand Pull and JIT
- Warehousing and EDI
- RMA, Warranty, Repair and Upgrades
- Regional Test Development

Certifications

- ISO 9001 and ISO 14001
- TL 9000
- UL/CSA

- **CABLES**
 - Zhangpu, CN
 - Monterrey, MX
 - Port Glasgow, UK
 - San Jose, CA

- **GLOBAL SERVICES**
 - Bogota, CO
 - Brno, CZ
 - Buenos Aires, AR
 - El Paso, TX
 - Guadalajara, MX
 - Johannesburg, ZA
 - Penang, MY
 - Tatabánya, HU
 - Thailand, TH
 - Juarez, MX
 - Markham, ON
 - Melbourne, AU
 - Mexico City, MX
 - Sao Paulo, BR
 - Basingstoke, UK
 - Kunshan, CN
 - Singapore, SG
 - San Jose, CA
 - Fort Mill, SC

- **DESIGN CENTERS**
 - Carrollton, TX
 - Chennai, IN
 - Colorado Springs, CO
 - Guadalajara, MX
 - Kanata, ON
 - Singapore, SG
 - Yasu, JP
 - Huntsville, AL

- **INTEGRATED MANUFACTURING SERVICES**
 - Carrollton, TX
 - Campinas, BR
 - Chennai, IN
 - Fermoy, IR
 - Guadalajara, MX
 - Gunzenhausen, GR
 - Haukipudas, FI
 - Huntsville, AL
 - Kanata, ON
 - Kenosha, WI
 - Kunshan, CN
 - Ma'alot, IL
 - Manchester, NH
 - Örnköldsvik, SW
 - Pathum Thani, TH
 - Penang, MY
 - Port Glasgow, UK
 - San Jose, CA
 - Shenzhen, CN
 - Singapore, SG
 - Tatabánya, HU
 - Salt Lake City, UT
 - Reynosa, MX

- **PLASTICS**
 - Turtle Lake, WI

- **PCB**
 - San Jose, CA
 - Costa Mesa, CA
 - Singapore, SG
 - Wuxi, CN

- **BACKPLANES**
 - San Jose, CA
 - Guadalajara, MX

- **MECHANICAL SYSTEMS**
 - Austin, TX
 - Fremont, CA
 - Guadalajara, MX
 - Newark, CA
 - Houston, TX
 - Suzhou, CN

ABOUT SANMINA CORPORATION

Sanmina Corporation is a leading integrated manufacturing solutions provider serving the fastest-growing segments of the global Electronics Manufacturing Services (EMS) market. Recognized as a technology leader, Sanmina provides end-to-end manufacturing solutions, delivering superior quality and support to Original Equipment Manufacturers (OEMs) primarily in the medical, communications networks, defense and aerospace, industrial and semiconductor systems, multimedia, computing and storage, automotive and clean technology sectors. Sanmina has facilities strategically located in key regions throughout the world.

©2019 Sanmina Corporation. Sanmina is a trademark or registered trademark in the U.S. and/or other jurisdictions of Sanmina Corporation. All trademarks and registered trademarks are the property of their respective owners. For more information, visit www.sanmina.com.