



SANMINA®

Medical Systems

HIGHEST STANDARDS FOR MEDICAL DESIGN & MANUFACTURING



SANMINA DESIGNS AND MANUFACTURES THE BROADEST RANGE OF FINISHED MEDICAL PRODUCTS IN THE INDUSTRY TODAY

Sanmina has more than 20 years of experience serving the medical industry. Our expertise includes a variety of diagnostic, therapeutic and laboratory devices, including:



THERAPY & SURGICAL

- Patient Monitoring
- Energy Based Surgical Controllers
- Optical Endoscopes
- Surgical Lighting
- Patch Products, Drug Delivery



PATIENT CARE & MONITORING

- Patient Monitoring
- Infusion Pumps
- Hospital Beds, Imaging Tables
- Respiration Equipment
- ECG / EKG



DIAGNOSTIC IMAGING

- Computed Tomography (CT)
- MRI Equipment
- X-Ray Equipment
- Nuclear Imaging
- Ultrasound Systems

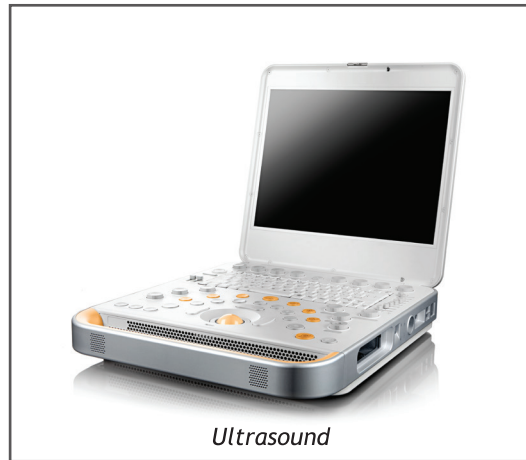


DIAGNOSTICS

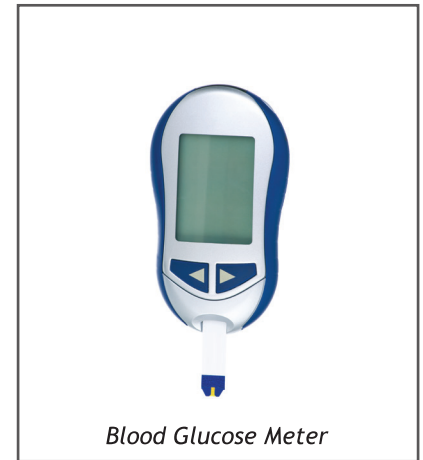
- Blood Diagnostic Equipment
- Molecular Diagnostic Equipment
- Blood Separation & Packaging
- Chemical Analysis
- Point of Use Diagnostics



RF Therapy



Ultrasound



Blood Glucose Meter

FULLY COMPLIANT MEDICAL DESIGN AND MANUFACTURING

Sanmina understands the need for quality and regulatory compliance. With a separate medical division and standardized quality system, each of our medical facilities complies with all applicable domestic and international regulations, including:

- FDA Quality Systems Regulation (QSR)
- ISO 13485
- ISO 9001
- CMDCAS

COMPREHENSIVE SERVICES FOR THE ENTIRE PRODUCT LIFECYCLE

From turnkey product design through fulfillment, repair and aftermarket services, we offer a complete range of solutions in QSR compliant facilities around the world:

- Product design and validation
- Manufacturing automation
- Test systems development
- Component and full systems assembly
- Documentation and regulatory compliance
- Fulfillment and global hubs
- Warranty and repair services





ABOUT SANMINA CORPORATION

Sanmina Corporation is a leading integrated manufacturing solutions provider serving the fastest-growing segments of the global Electronics Manufacturing Services (EMS) market. Recognized as a technology leader, Sanmina provides end-to-end manufacturing solutions, delivering superior quality and support to Original Equipment Manufacturers (OEMs) primarily in the medical, communications networks, defense and aerospace, industrial and semiconductor systems, multimedia, computing and storage, automotive and clean technology sectors. Sanmina has facilities strategically located in key regions throughout the world.

For more information, visit www.sanmina.com.

NORTH AMERICA

2700 North First Street
San Jose, CA 95134
Tele: +408.964.3500
Fax: +408.964.3440

EUROPE & MIDDLE EAST

Lerchenstrasse 1
91710 Gunzenhausen
Germany
Phone: +49.(0)9831.51.0

GREATER CHINA

Kader Industrial Building, 5th Floor
22 Kai Cheung Road
Kowloon Bay, Hong Kong
Tele: +852.2305.1800
Fax: +852.2799.2398

SOUTHEAST ASIA

No 2, Chai Chee Drive
Singapore 469044
Republic of Singapore
Tele: +65-6245-7300
Fax: +65-6274-5385

www.sanmina.com

Sanmina Corporation is an EEO/AA employer

©2019 Sanmina Corporation. All rights reserved. Sanmina® is a registered trademark of Sanmina Corporation. All other trademarks and product names used in this publication are for identification purposes only and may be trademarks of their respective owners.

MED_BR_103119